



OAKFIELD



Village Green Lane, East Dean, Eastbourne, BN20 0DR

£1,400 Per Calendar Month



Village Green Lane, East Dean, Eastbourne, BN20 ODR

A beautifully secluded and spacious two-bedroom bungalow in the sought-after village of East Dean, just outside Eastbourne, set within the South Downs National Park.

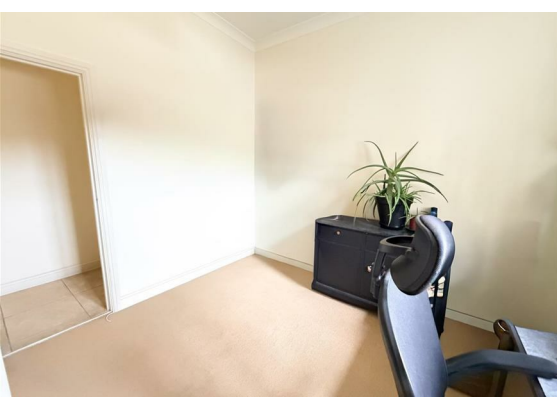
Accessed via a shared gated entrance and tucked away in a peaceful position, the property offers a strong sense of privacy while remaining close to village amenities and scenic walks. Inside, high ceilings and large windows and skylights create a bright, airy feel throughout.

The standout feature is the generous open-plan living space, where the kitchen, dining and lounge areas flow seamlessly together, ideal for modern living and entertaining. Both bedrooms are well-proportioned doubles, with a comfortable and versatile layout.

Outside, the bungalow offers a front lawn and shared barn converted space, ideal for car storage.

Please Note:
An annual household income of £42,000 per annum is required





Living/Kitchen

24'7" x 14'11" (7.50 x 4.57)

Bedroom One

14'9" x 10'9" (4.51 x 3.28)

Bedroom Two

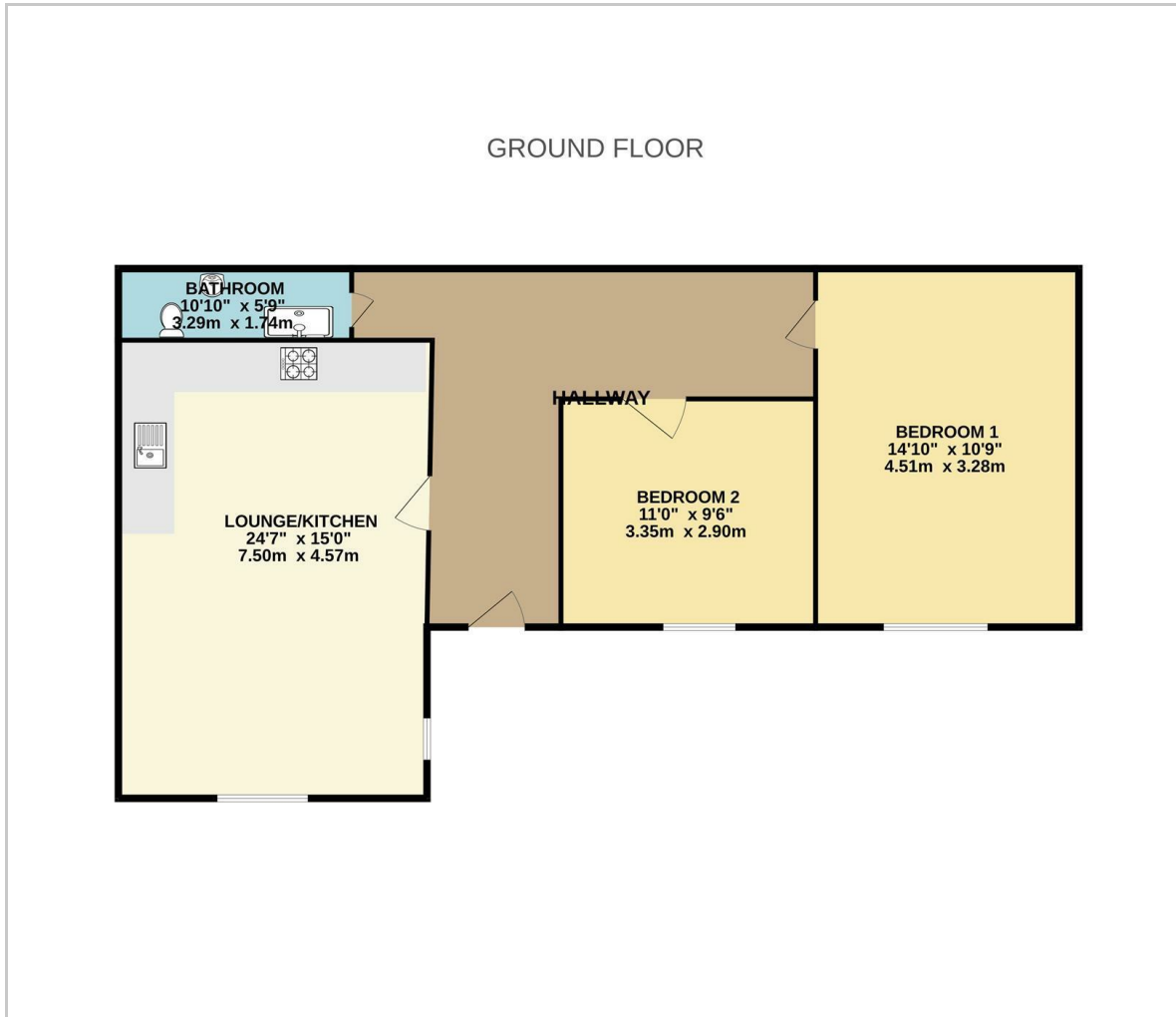
10'11" x 9'6" (3.35 x 2.90)

Bathroom

10'9" x 5'8" (3.29 x 1.74)

Council Tax Band B - £1932

Floor Plan

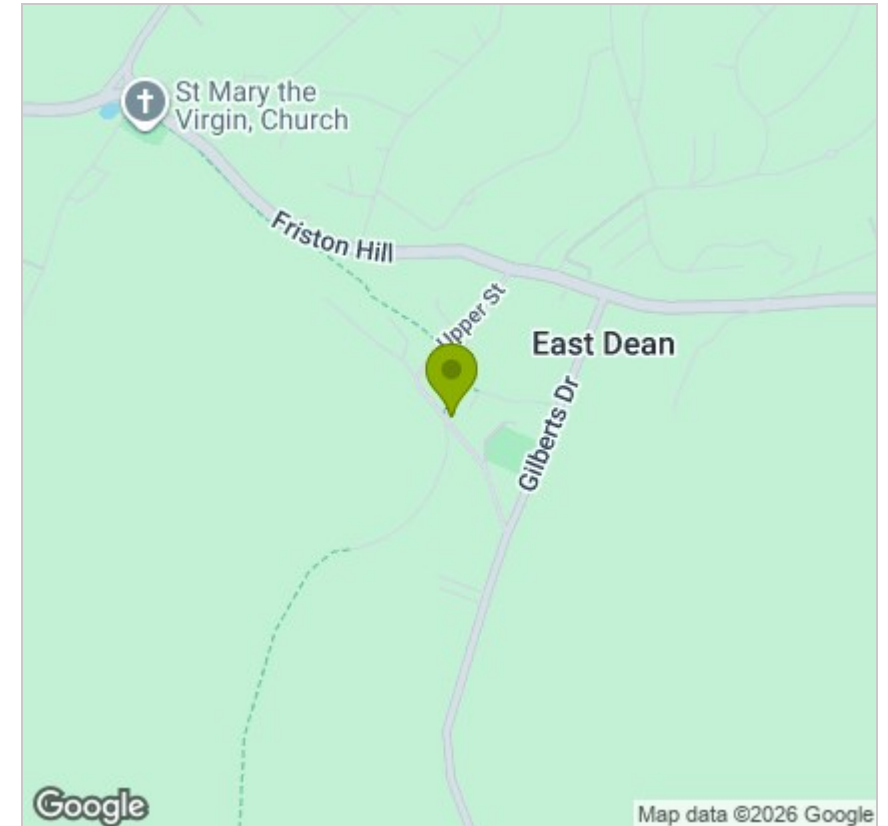


Viewing

Please contact us on 01323 405553 if you wish to arrange a viewing appointment for this property or require further information.

These particulars, whilst believed to be accurate are set out as a general outline only for guidance and do not constitute any part of an offer or contract. Intending purchasers should not rely on them as statements of representation of fact, but must satisfy themselves by inspection or otherwise as to their accuracy. No person in this firm's employment has the authority to make or give any representation or warranty in respect of the property.

Area Map



Energy Efficiency Graph

